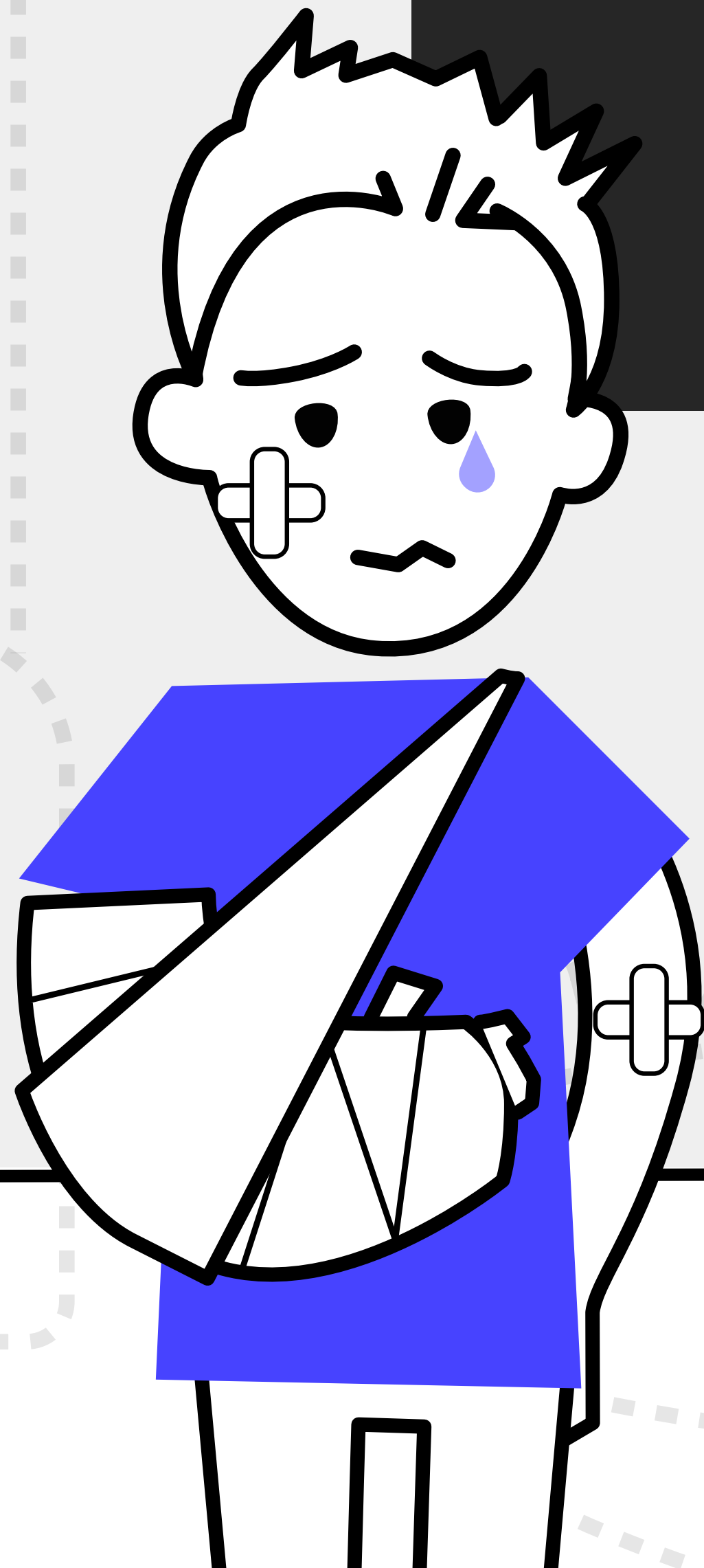


NEXT DAY...









WHO WOULD YOU EMPLOY?

Pathological gambling evoke

mood disorder up to 49.6%, anxiety disorder 41.3%, personality disorder 60.8%, alcohol use disorder 73.2%, drug use disorder 38.1% and nicotine dependence 60.4%.

5% of fraud

is related to gambling problem (up to £225 million each year).

**Over 80% of people who suffer
from gambling addiction**

never seek treatment, no matter how bad their problem is.



YOU'RE THE BOSS OF YUR LIFE